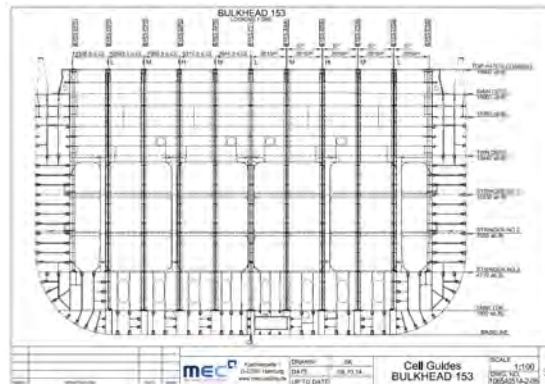
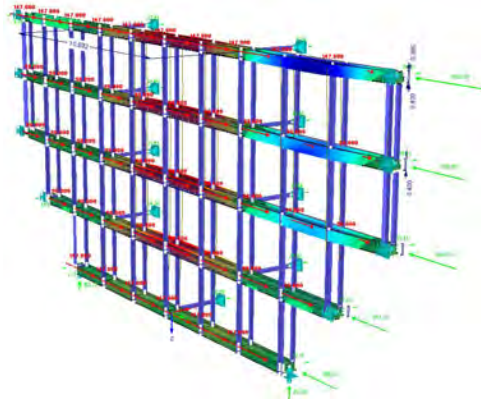


Cell Guides

MEC has more than 25 years' experience in design and fabrication of high-performance cell guides. Our extensive know-how in this sector ensures you maximum savings in costs and weight in accordance with ongoing optimization.

Fixed and movable cell guides are available in accordance with customers' individual requirements, incorporating contours for accommodation of tank steps and other hold details. Users of MEC cell guides benefit from their rugged design, workhorse dependability and minimized weight.



Movable Cell Guides

Movable cell guides provide enhanced flexibility for mixed loading with different-sized containers. We offer versions for a broad variety of ship designs, including large sea-going vessels.

MEC's integrated mixed-lashing system for space-efficient stowage of 53 ft, 45 ft as well as 40 ft containers has received widespread acclaim and numerous international certifications.

Fixed and movable cell guides are available in accordance with customers' individual requirements, incorporating contours for accommodation of tank steps and other hold details. Users of MEC cell guides benefit from their rugged design, workhorse dependability and minimized weight.

Cell Guides On Open Top Container Vessel

- Concept
- Strength calculations
- Basic design
- Workshop drawings
- Production
- Installation



For open-top container vessels or large container vessels cell guide stoppers with more than nine tiers have to be installed in order to absorb the post compression of the lowest container in hold. MEC has designed various types of cell guide stoppers just for this purpose

